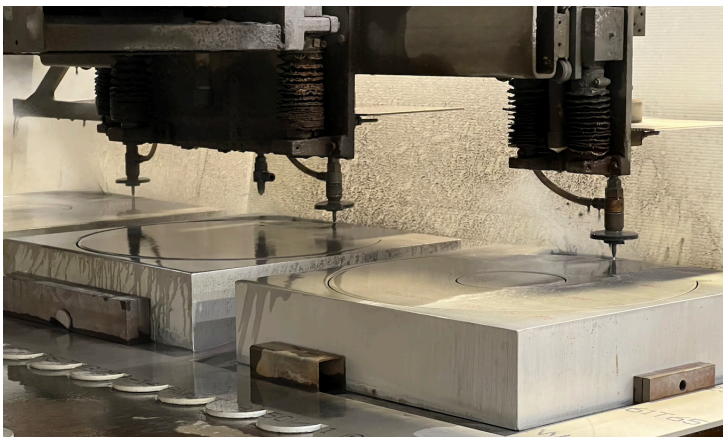
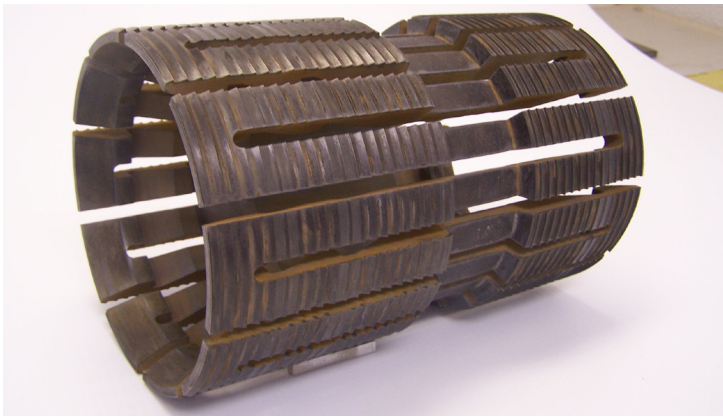


WATERJET

**ISO 9001:2015
REGISTERED
COMPANY**

4 AXIS CUTTING



- **Waterjet cutting is versatile, precise, and very efficient**
- Thickness ranging from .002" to 13"
- **Tolerances to +/- .005**
- No Heat Affected Zones (HAZ), meaning no warping or discoloration
- **Our machine has 4 heads for increased productivity**
- Environmentally friendly: No chemicals, clean cutting, green manufacturing
- **Abrasive waterjet cutting technology can cut materials considered "unmachinable"**
- Cutting process is computer controlled, so cutting multiple parts requires almost no additional setup time

- **We can waterjet cut:**
- Aluminum
- Titanium
- Inconel
- Stainless Steel
- Carbon and Alloy Steels
- Copper
- Brass
- Bronze
- Plastics
- Composites
- Laminates
- Stone
- Tile
- Rubber
- Wood
- Glass
- Tube/Pipe

astmfg.com

o: 972.554.0383 f: 972.579.7839

1000 Avenue N, Grand Prairie, TX 75050

AST
MANUFACTURING



Since 1993, AST Manufacturing has provided precision metal fabricating services using Laser Cutting, CNC Machining, Waterjet Cutting, and CNC Sheet Metal forming technologies. AST has 4 CNC machining centers, 2 laser cutting machines, 1 waterjet table equipped with 4 cutting heads and all the required support equipment. All of AST's machinery utilizes the latest in CNC Controls to provide the most precise part making in the industry.

Using the latest CNC manufacturing technology supported by CAD/CAM and production control software AST Manufacturing belongs to an exclusive group of Metal Fabricating companies.

AST Manufacturing provides its customers with outstanding levels of productivity and reliability laser profiling that makes us an obvious choice for your metal fabricating requirements; we offer a fast efficient and ISO 9000 quality oriented service to customers. Highly accurate, high tolerance components can be manufactured from many types of plate, sheet and square tube materials.